



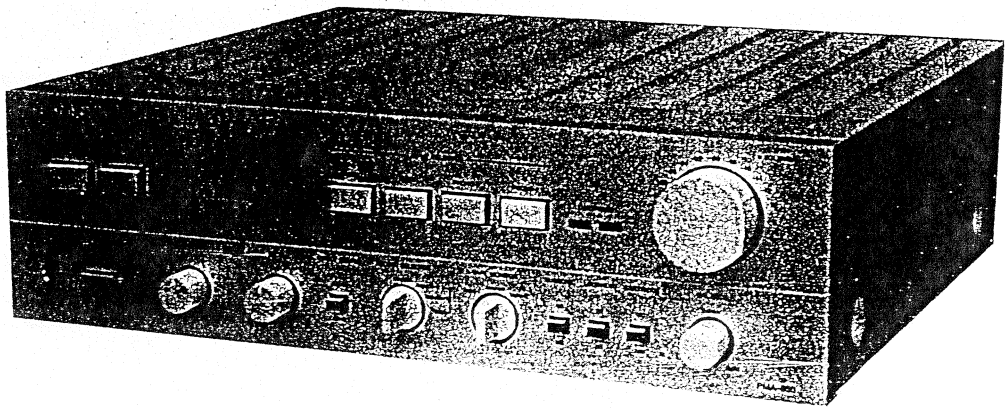
DENO-00221

DENON

2110433002

Hi-Fi Component Amplifier

SERVICE MANUAL MODEL PMA-550



SPECIFICATIONS	1
BLOCK DIAGRAM	1
METHOD OF ADJUSTMENTS	2
NOTES ON SERVICING REMOTE SWITCH	2
EXPLODED VIEW OF CHASSIS AND CABINET	3
PARTS LIST FOR EXPLODED VIEW	4
PRINTED CIRCUIT BOARD PATTERNS AND PARTS LIST	
EQ. CONTROL UNIT AUE-010	5,6
INPUT SWITCH, LED UNIT ETC-392B	7
POWER AMP UNIT PUX-028	8~10
POWER SUPPLY UNIT ETC-393B	11,12
WIRING DIAGRAM	13,14
CONNECTION DIAGRAM	15,16

NIPPON COLUMBIA CO., LTD.

SPECIFICATIONS

POWER AMPLIFIER SECTION (TUNER -- SPOUT)

Rated Output: Both channels driven
 20 Hz ~ 20 kHz 100 W + 100 W (8 ohm load THD 0.005%)
 1 kHz 140 W + 140 W (4 ohm load) (MAX)
 1 kHz 100 W + 100 W (4 ohm load) (IEC)

Total Harmonic Distortion: Less than 0.005 %

Intermodulation Distortion: Less than 7 kHz/60 Hz; 1/4 0.008% (at amplitude output) equivalent to rated output)

Power Band Width: 5 Hz ~ 100 kHz (IHF, T.H.D. 0.035%)

Transmission Characteristics: 1 Hz ~ 400 kHz $+0$ dB (at 1 W output) -3 dB

Input Sensitivity: 150 mV

Input Impedance: 40 k ohm

Output Impedance: 0.1 ohm (1 kHz)

SN Ratio (IHFA Network): 108 dB (Input terminals short-circuited)

Output Terminals: Speaker: A & B load 4 ~ 16 ohm, A + B load 8 ~ 16 ohm; Headphone/ Stereo headphone

EQUALIZER AMPLIFIER SECTION

Equalizer Amplifier Output (REC OUT Terminal): Maximum output 10 V (at 50 k ohm load)
 Rated output 150 mV
 Total harmonic distortion: below 0.001% (at 1 kHz, 8 V output)

Input Sensitivity/Input Impedance:

PHONO-1	MM	2.5 mV	50 k ohm
PHONO-2	MC	125 μ V	100 ohm
TUNER		150 mV	40 k ohm
AUX, TAPE		150 mV	40 k ohm

RIAA Deviation:

PHONO-1	MM	Within ± 0.2 dB (20 Hz ~ 100 kHz)
PHONO-2	MC	Within ± 0.2 dB (20 Hz ~ 100 kHz)

OVERALL CHARACTERISTICS

SN Ratio (IHFA Network): PHONO-1 MM 90 dB (Input terminals short-circuited, at 2.5 mV input)
 PHONO-2 MC 73 dB (Input terminals short-circuited, at 250 μ V input)

TUNER TAPE AUX 108 dB (Input terminals short-circuited)

Tone Control Adjustable Range:

BASS	100 Hz ± 8 dB
TREBLE	10 kHz ± 8 dB

Filtering Characteristics: EQUALIZER SUBSONIC 18 Hz, 6 dB/oct

Loudness Characteristics: Low Frequency 100 Hz + 7 dB
 High Frequency 10 kHz + 6 dB

AC OUTLET:

(For U.S and Canada) Not included in systems for European use
 SWITCHES x 2, 100 W (Total)
 UNSWITCHED x 1 250 W

POWER SOURCE:

Germany and France: AC 220 V, 50 Hz
 U.K.: AC 240 V, 50 Hz
 U.S.A.: AC 120 V, 60 Hz
 Hong Kong: AC 200 V, 50 Hz

POWER CONSUMPTION:

260 W (U.S.A.)
 430 VA (Canada)
 740 W (at maximum output) (IEC)

DIMENSIONS:

434 mm (W) x 132 mm (H) x 407 mm (D)
 (including rubber feet, control knobs and terminals)

WEIGHT:

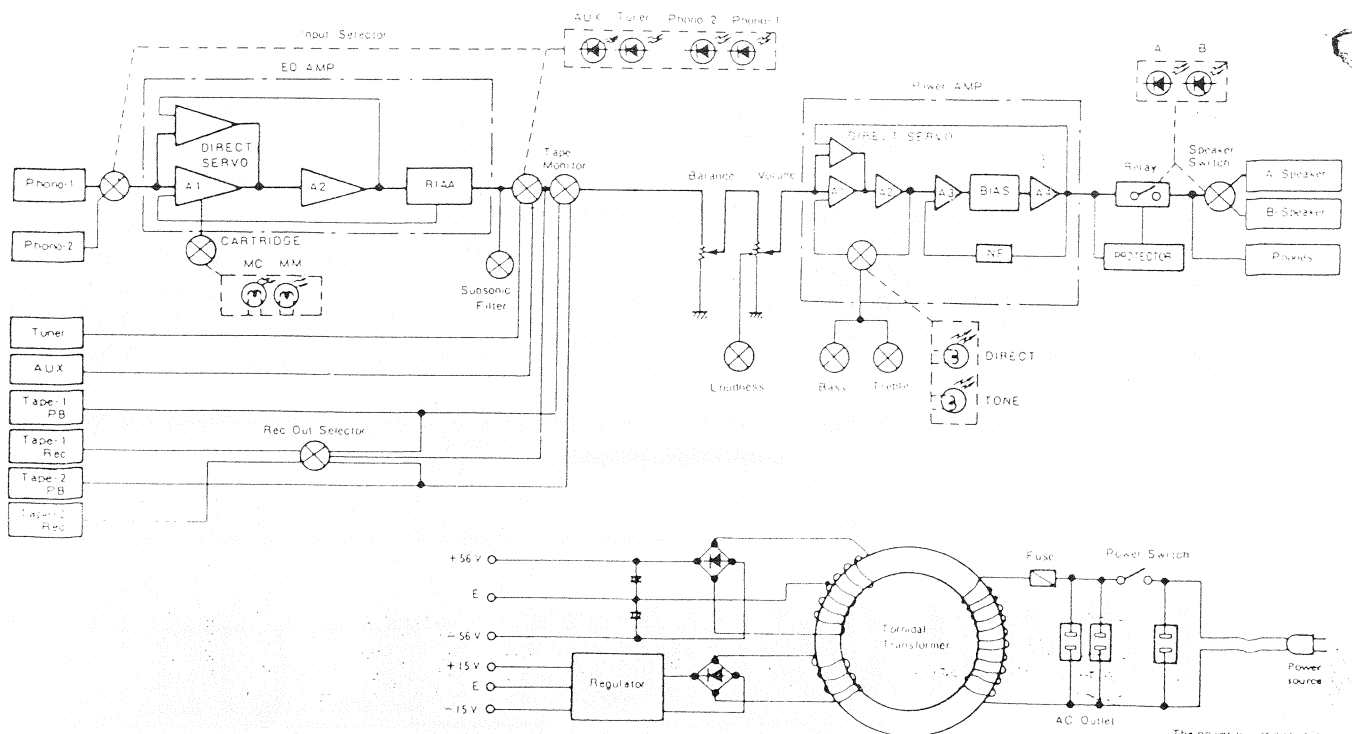
13.5 kg

Design and specifications are subject to change without prior notice

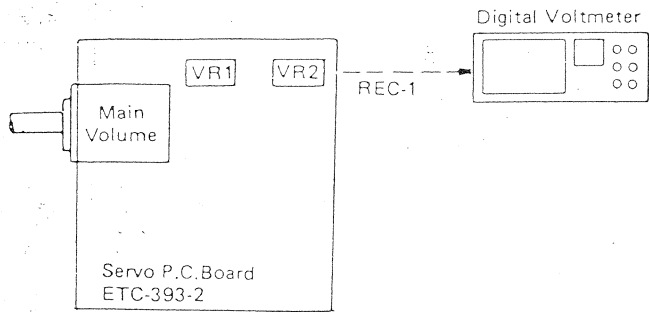
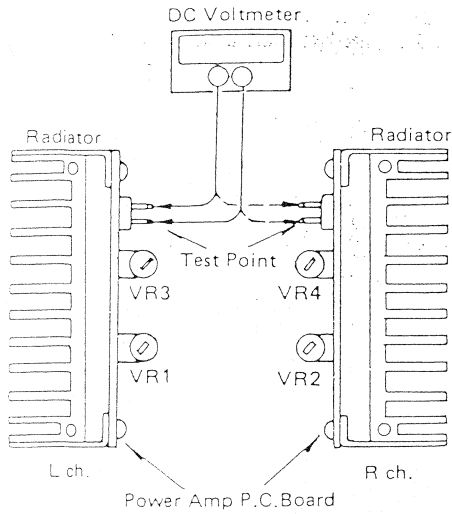
NOTE: The following codes correspond to the appropriate models.

E2 for Europe, EA for Australia, EK for U.K., EC for Canada, E3 for U.S.A.

BLOCK DIAGRAM



METHOD OF ADJUSTMENT



IDLE CURRENT ADJUSTMENT METHOD OF POWER AMP (PUX-028 PRINTED BOARD)

- Place the unit in normal position, not sideways or tilted. Avoid too much ventilation, since the adjustment must be done where temperature is between 15°C and 30°C.
- Set the switches on the unit as follows:

Power	→ OFF
Volume	→ -∞ dB
Direct couple	→ Direct
Speaker terminals	→ No load (no speaker connected)
- Remove the top cover, and the VR1, VR2, VR3 and VR4 fully counterclockwise. Connect a DC voltmeter to the test points.
- Plug in the AC cord to power outlet of: Europe 220 V (198 ~ 231 V); U.K. and Australia 240 V (216 ~ 252 V); Canada and U.S.A. 120 V (108 ~ 126 V); and turn the power on. Immediately (within one minute), turn VR1 and VR2 clockwise and adjust the test point voltage (VTP) to 7 ± 2 mV preliminarily.
- After about two minutes of the above preliminary adjustment, adjust VR1 and VR2 so as VTP reads 10 ± 2 mV.
- Adjust VR3 and VR4 so as VTP reads 25 ± 2 mV preliminarily.

ADJUSTMENT OF SERVO (ETC-393-2 PRINTED BOARD)

PREPARATION

- Insert short pins into PHONE input terminals.
- Connect a digital voltmeter (0.01 mV ~ 1 mV DC range must be measurable) into each of REC. out terminals (L & R channels).
- Set the FUNCTION switch to "PHONO-1" position and CARTRIDGE changeover switch to "MM" position and turn the main volume to MIN.

ADJUSTMENT

- Turn POWER on and after two minutes warming-up conduct the following adjustments.
- Adjust VR1 (100 kohm semi-solid volume), so as the L-channel digital voltmeter reads 0.5 mV DC or less.
- Adjust VR2 (100 kohm semi-solid volume), so as the R-channel digital voltmeter reads 0.5 mV DC or less.

NOTE ON SERVICING REMOTE SWITCH

- Hold the case when remove and install the speaker switch.

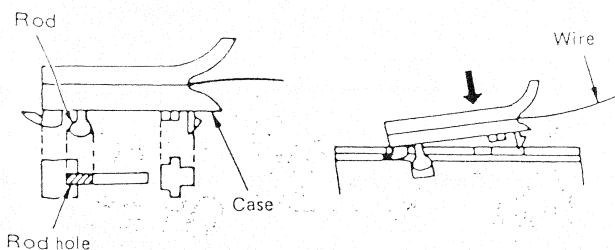


Fig. 1 How to install

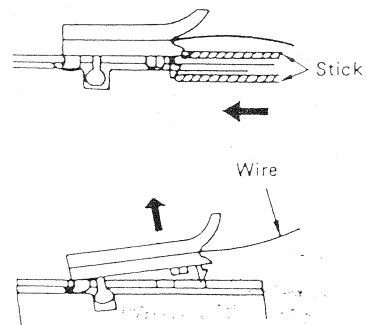
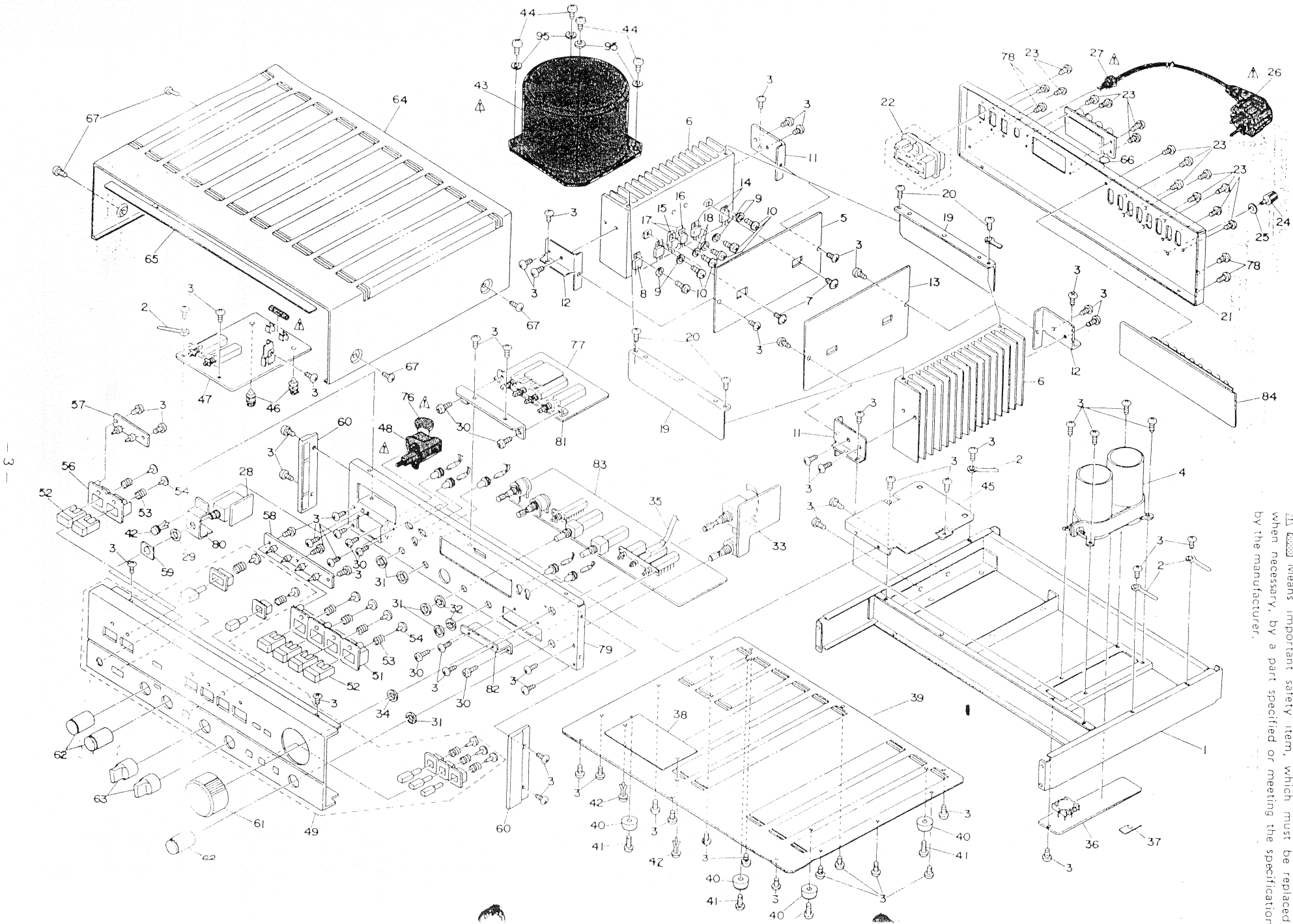


Fig. 2 How to remove

EXPLODED VIEW OF CHASSIS AND CABINET



Means important safety item, which must be replaced, when necessary, by a part specified or meeting the specification by the manufacturer.

EXPLODED VIEW OF PARTS LIST

Note: See addendum list below for the Parts with asterisk (*) on the Ref. No. and the other Part not included in this list. Ref. No. in () for packing parts and not appear on the exploded view.

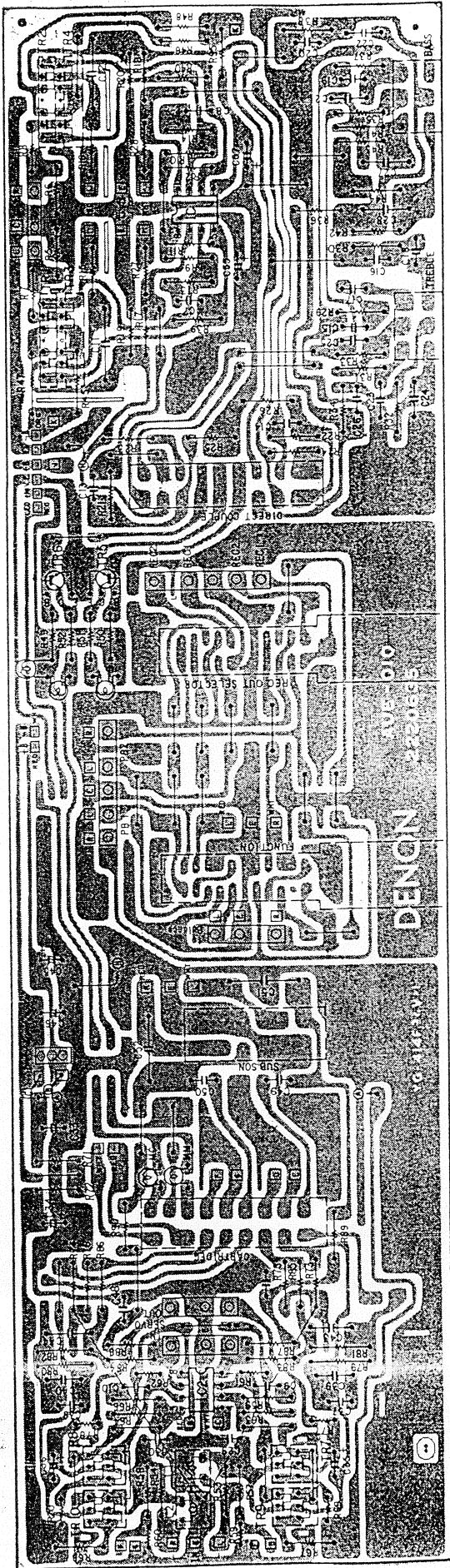
Ref. No.	Part No.	Part Name & Descriptions	Ref. No.	Part No.	Part Name & Descriptions
1	4110251208	MAIN CHASSIS ASS.	44	4730455015	TAPING SCREW (2) 4x10
2	EP4772	CORD HOLDER	45	4120725106	BOARD BRACKET
3	4730354019	TAPPING SCREW (2) 3x8	46	MD-5271	P.C.B. SUPPORT
4	2546027008	CHEMICON 22000 μ x2 63V	47	ETC-393B-1	POWER SUPPLY UNIT
5	PUX-028-1	POWER AMP (L) UNIT	48	2124202012	PUSH SWITCH
6	4170125002	POWER RADIATOR	49	1440698107	FRONT PANEL ASS.
7	4700026005	TAPPING SCREW (2) WITH WASHER 3x8	50	-	-
8	2710139049	TRANSISTOR 2SA1146(R)/(O)LB	51	1140054009	PANEL BUSH
9	4150175001	WASHER	52	1130217005	PUSH KNOB ASS.
10	4700012006	CROSS PAN SCREW WITH S. WASHER 3x12	53	4630220007	SPRING
11	4120729005	RADIATOR BRACKET (A)	54	1190014002	STOPPER
12	4120730007	RADIATOR BRACKET (B)	55	1240029015	FELT SHEET (A)
13	PUX-0282	POWER AMP (R) UNIT	56	1140055008	PANEL BUSH
14	2730241043	TRANSISTOR 2SC2706(R)/(O)LB	57	ETC-392B6	SP LED UNIT
15	2710140025	TRANSISTOR 2SA968(Y)/(O)LB110A	58	ETC-392B-7	INPUT LED UNIT
16	2730240028	TRANSISTOR 2SC2238(Y)/(O)LB110A	59	4610149001	RUBBER SHEET
17	4150052001	INSULATING SHEET	60	1460283107	ESCUTCHEON PLATE
18	4150171005	WASHER	61	1120265106	KNOB (FOR MAIN VR)
19	4140217102	SHIELD BRACKET	62	1120309004	KNOB (FOR TONE & BALANCE)
20	4730353010	TAPPING SCREW (2) 3x6	63	1120308005	KNOB (FOR TAPE)
*21	1050339005	BACK PANEL	64	1020103106	TOP COVER
22	-	-	65	1220069011	SPACER
23	-	-	66	1040034006	STOPPER
24	2050071016	TERMINAL	67	4734801005	TAPPING SCREW (2) 4x8
25	4770018001	WASHER	(68)	5040064001	CABINET SHEET
26	2062016001	AC CORD	(69)	5030253000	CUSHION
27	4450020005	CORD BUSH	* (70)	5010647021	CARTON CASE
28	ETC-392B-4	HEADPHONE UNIT	* (71)	5110803008	INST. MANUAL
29	-	NUT 12mm SP	* (72)	-	-
30	4711303018	CROSS PAN SCREW 3x6	* (73)	-	-
31	-	NUT 7mm SP	* (74)	-	-
32	-	TOOTH WASHER 7mm SP	* (75)	-	-
33	ETC-393B-2	VR SERVO UNIT	76	2518001007	CAPACITOR 0.01 μ F 450V OIL CAPACITOR
34	-	NUT 8mm SP	77	ETC-392B-1	INPUT UNIT
35	4350051006	FLEXIBLE SLIDER	78	4770064107	FIXING SCREW
36	ETC-393B-3	POWER REC. UNIT	79	4120726103	FRONT CHASSIS
37	2050125001	EARTH PLATE	80	4120727104	HEADPHONE BRACKET
38	4140218004	SHIELD PLATE	81	4120724107	4P SWITCH BRACKET
39	1050336202	BOTTOM COVER	82	4120726105	3P SWITCH BRACKET
40	1048001002	FOOT	83	AUE-010	EQ. CONTROL UNIT
41	4730355018	TAPPING SCREW (2) 3x10	84	ETC-392B-2	INPUT LED UNIT
42	4770096007	PUSH RIVET	*85	2061015087	FUSE (4A)
43	2335241008	POWER TRANS.	86	2048070003	5P CONNECTOR (DIN)

ADDENDUM LIST

Ref. No.	Part Name & Descriptions	EF For France	EK For U.K	E3 For U.S.A
21	BACK PANEL	1050339102	1050339102	1050349008
26	ACCORD	2062016001	2062020000	2062019008
27	CORD BUSH	4450020005	MD-2982H	MD-3802
43	POWER TRANS.	2335241008	2335246003	2335257005
48	PUSH SWITCH	2124202012	2124202012	2124202025
70	CARTON CASE	5010647089	5010647089	5010647089
(72)	GUARANTEE CARD	5150183...	5150230000	-
(73)	IMPORTANT LABEL	-	5130372001	-
(74)	CAUTION SHEET	-	5130364006	-
(75)	FUSE LABEL	5130159185	5130159185	-
76	CAPACITOR	2518001007 OIL CAP 0.01μF 450V	2518001007 OIL CAP 0.01μF 450V	2568005121 METALIZ. ED. 0.022μF-150V 2032052008
	3mm TOOTH WASHER	-	4753001051	-
	3T LUG	-	2050003000	-
	EARTH LABEL	-	5130140000	-
	VOLTAGE LABEL	-	5130362008	-
	S. NO. PLATE	-	-	-
	4mm TOOTH WASHER	-	4753100004	5130398153
85	FUSE (TIMELOG TYPE)	2061015087 (4A)	2061015087 (4A)	2061023095 (8A)

PRINTED CIRCUIT BOARD PATTERNS AND PARTS LIST

AUE-010 EQ. CONTROL UNIT



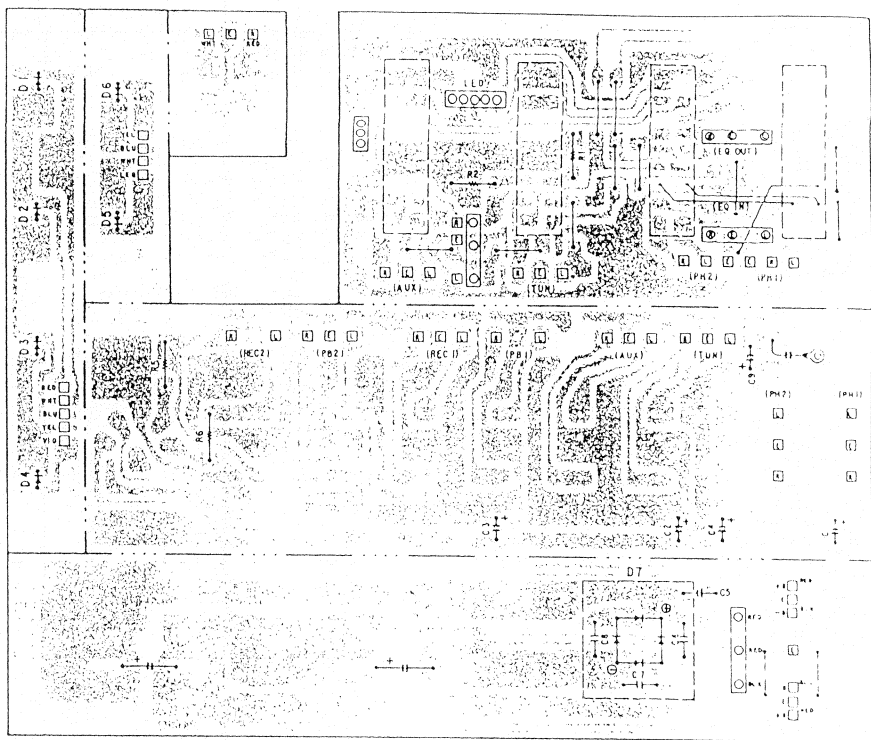
AUE-010 PARTS LIST

Ref. No.	Part No.	Part Name & Descriptions	
SEMICONDUCTORS			
IC01	2630118001	NJM4560D	INTEGRATED CIRCUIT
IC02	2630118014	NJM4560DD	INTEGRATED CIRCUIT
TR01	2750024033	μ PA68H(M/L)	FIELD EFFECT TRANSISTOR (DUAL TYPE)
TR02	2750024033	μ PA68H(M/L)	FIELD EFFECT TRANSISTOR (DUAL TYPE)
TR03	2750024033	μ PA68H(M/L)	FIELD EFFECT TRANSISTOR (DUAL TYPE)
TR04	2750024033	μ PA68H(M/L)	FIELD EFFECT TRANSISTOR (DUAL TYPE)
TR05	2730111063	2SC1213(D)/(C)	TRANSISTOR
TR06	2730111063	2SC1213(D)/(C)	TRANSISTOR
TR07	2750029009	2SK240(BL)/V	FIELD EFFECT TRANSISTOR (DUAL TYPE)
TR08	2750029009	2SK240(BL)/V	FIELD EFFECT TRANSISTOR (DUAL TYPE)
TR09	2750029009	2SK240(BL)/V	FIELD EFFECT TRANSISTOR (DUAL TYPE)
TR10	2750029009	2SK240(BL)/V	FIELD EFFECT TRANSISTOR (DUAL TYPE)
COILS			
L01	2318017000	INDUCTOR	
L02	2318017000	INDUCTOR	
RESISTORS			
R05	2412292909	510 kohm \pm 5% $\frac{1}{4}$ W FIXED CARBON FILM	
R06	2412292909	510 kohm \pm 5% $\frac{1}{4}$ W FIXED CARBON FILM	
R07	2412219908	470 ohm \pm 5% $\frac{1}{4}$ W FIXED CARBON FILM	
R08	2412219908	470 ohm \pm 5% $\frac{1}{4}$ W FIXED CARBON FILM	
R09	2412239904	3.3 kohm \pm 5% $\frac{1}{4}$ W FIXED CARBON FILM	
R10	2412239904	3.3 kohm \pm 5% $\frac{1}{4}$ W FIXED CARBON FILM	
R11	2412239904	3.3 kohm \pm 5% $\frac{1}{4}$ W FIXED CARBON FILM	
R12	2412239904	3.3 kohm \pm 5% $\frac{1}{4}$ W FIXED CARBON FILM	
R13	2412215902	330 ohm \pm 5% $\frac{1}{4}$ W FIXED CARBON FILM	
R14	2412215902	330 ohm \pm 5% $\frac{1}{4}$ W FIXED CARBON FILM	
R15	2412275900	100 kohm \pm 5% $\frac{1}{4}$ W FIXED CARBON FILM	
R16	2412275900	100 kohm \pm 5% $\frac{1}{4}$ W FIXED CARBON FILM	
R17	2412299902	1M ohm \pm 5% $\frac{1}{4}$ W FIXED CARBON FILM	
R18	2412299902	1M ohm \pm 5% $\frac{1}{4}$ W FIXED CARBON FILM	
R19	2412275900	100 kohm \pm 5% $\frac{1}{4}$ W FIXED CARBON FILM	
R20	2412275900	100 kohm \pm 5% $\frac{1}{4}$ W FIXED CARBON FILM	
R21	2412252907	11 kohm \pm 5% $\frac{1}{4}$ W FIXED CARBON FILM	
R22	2412252907	11 kohm \pm 5% $\frac{1}{4}$ W FIXED CARBON FILM	
R23	2412252907	11 kohm \pm 5% $\frac{1}{4}$ W FIXED CARBON FILM	
R24	2412252907	11 kohm \pm 5% $\frac{1}{4}$ W FIXED CARBON FILM	
R25	2412227903	1 kohm \pm 5% $\frac{1}{4}$ W FIXED CARBON FILM	
R26	2412227903	1 kohm \pm 5% $\frac{1}{4}$ W FIXED CARBON FILM	
R27	2412203901	100 ohm \pm 5% $\frac{1}{4}$ W FIXED CARBON FILM	
R28	2412203901	100 ohm \pm 5% $\frac{1}{4}$ W FIXED CARBON FILM	
R29	2412245901	5.6 kohm \pm 5% $\frac{1}{4}$ W FIXED CARBON FILM	
R30	2412245901	5.6 kohm \pm 5% $\frac{1}{4}$ W FIXED CARBON FILM	
R31	2412271904	68 kohm \pm 5% $\frac{1}{4}$ W FIXED CARBON FILM	
R32	2412271904	68 kohm \pm 5% $\frac{1}{4}$ W FIXED CARBON FILM	
R33	2412236907	2.4 kohm \pm 5% $\frac{1}{4}$ W FIXED CARBON FILM	
R34	2412236907	2.4 kohm \pm 5% $\frac{1}{4}$ W FIXED CARBON FILM	
R35	2412227903	1 kohm \pm 5% $\frac{1}{4}$ W FIXED CARBON FILM	
R36	2412227903	1 kohm \pm 5% $\frac{1}{4}$ W FIXED CARBON FILM	
R37	2412262900	30 kohm \pm 5% $\frac{1}{4}$ W FIXED CARBON FILM	
R38	2412262900	30 kohm \pm 5% $\frac{1}{4}$ W FIXED CARBON FILM	
R39	2412215902	330 ohm \pm 5% $\frac{1}{4}$ W FIXED CARBON FILM	
R40	2412215902	330 ohm \pm 5% $\frac{1}{4}$ W FIXED CARBON FILM	
R41	2412279906	150 kohm \pm 5% $\frac{1}{4}$ W FIXED CARBON FILM	
R42	2412279906	150 kohm \pm 5% $\frac{1}{4}$ W FIXED CARBON FILM	

ETC 392B INPUT SW LED UNIT

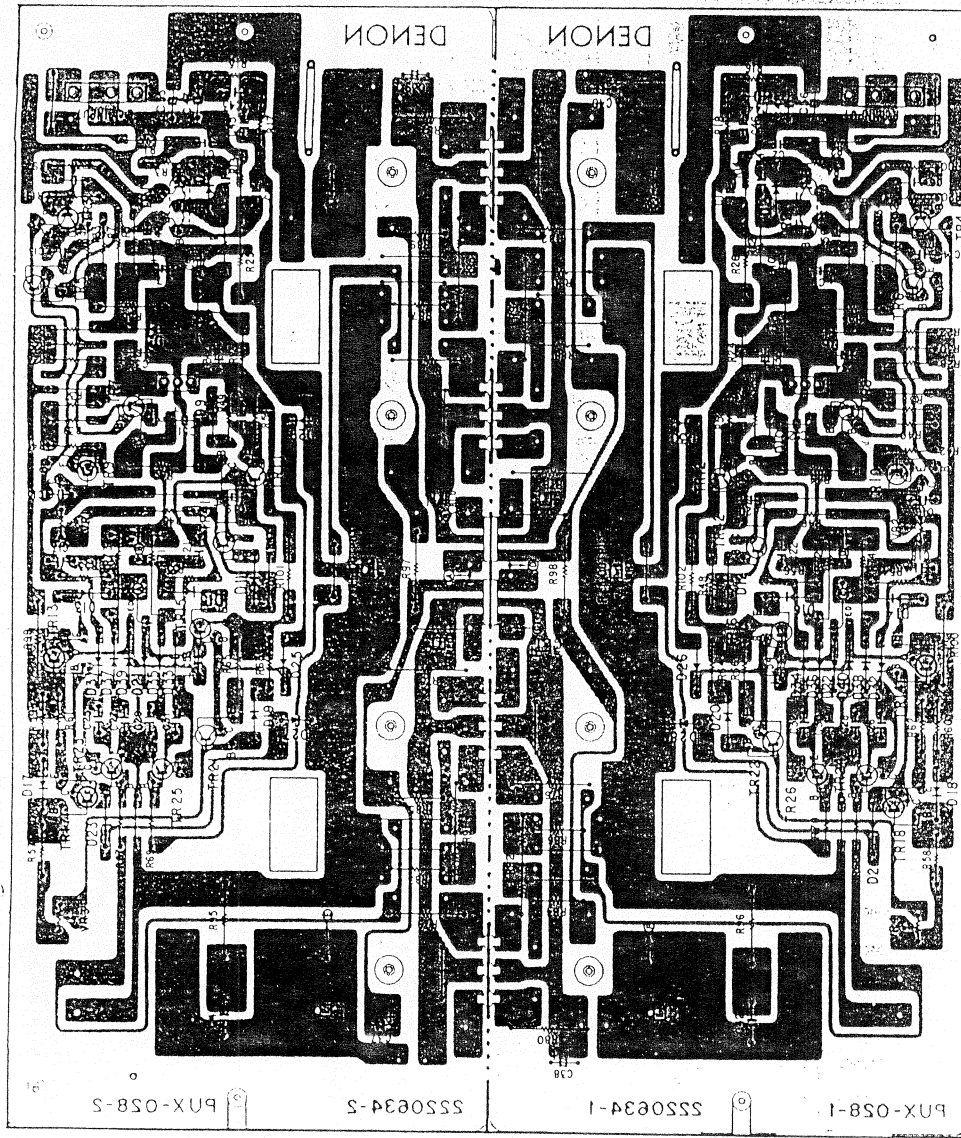
Ref. No.	Part No.	Part Name & Descriptions
R43	2412245901	5.6 kohm ±5% 1/4W FIXED CARBON FILM
R44	2412245901	5.6 kohm ±5% 1/4W FIXED CARBON FILM
R45	2412108006	4.7 kohm ±5% 1/4W FIXED CARBON FILM
R46	2412243903	4.7 kohm ±5% 1/4W FIXED CARBON FILM
R47	2412108006	4.7 kohm ±5% 1/4W FIXED CARBON FILM
R48	2412243903	4.7 kohm ±5% 1/4W FIXED CARBON FILM
R49	2412248908	7.5 kohm ±5% 1/4W FIXED CARBON FILM
R50	2412255904	15 kohm ±5% 1/4W FIXED CARBON FILM
R51	2412179909	100 ohm ±5% 1/4W FIXED CARBON FILM
R52	2412171907	4.7 ohm ±5% 1/4W FIXED CARBON FILM
R53	2412211906	220 ohm ±5% 1/4W FIXED CARBON FILM
R54	2412211906	220 ohm ±5% 1/4W FIXED CARBON FILM
R57	2412203901	100 ohm ±5% 1/4W FIXED CARBON FILM
R58	2412203901	100 ohm ±5% 1/4W FIXED CARBON FILM
R59	2412029091	51 kohm ±5% 1/4W FIXED CARBON FILM
R60	2412029091	51 kohm ±5% 1/4W FIXED CARBON FILM
R61	2412020003	1.5 kohm ±5% 1/4W FIXED CARBON FILM
R62	2412020003	1.5 kohm ±5% 1/4W FIXED CARBON FILM
R63	2412231902	1.5 kohm ±5% 1/4W FIXED CARBON FILM
R64	2412231902	1.5 kohm ±5% 1/4W FIXED CARBON FILM
R65	2412211906	220 ohm ±5% 1/4W FIXED CARBON FILM
R66	2412211906	220 ohm ±5% 1/4W FIXED CARBON FILM
R67	2412231902	1.5 kohm ±5% 1/4W FIXED CARBON FILM
R68	2412231902	1.5 kohm ±5% 1/4W FIXED CARBON FILM
R69	2412020003	1.5 kohm ±5% 1/4W FIXED CARBON FILM
R70	2412020003	1.5 kohm ±5% 1/4W FIXED CARBON FILM
R71	2412085006	510 ohm ±5% 1/4W FIXED CARBON FILM
R72	2412085006	510 ohm ±5% 1/4W FIXED CARBON FILM
R73	2412202902	91 ohm ±5% 1/4W FIXED CARBON FILM
R74	2412202902	91 ohm ±5% 1/4W FIXED CARBON FILM
R75	2412171907	4.7 ohm ±5% 1/4W FIXED CARBON FILM
R76	2412171907	4.7 ohm ±5% 1/4W FIXED CARBON FILM
R77	2412312009	2.7M ohm ±5% 1/4W FIXED CARBON FILM
R78	2412312009	2.7M ohm ±5% 1/4W FIXED CARBON FILM
R79	2412018002	3.9 kohm ±2% 1/4W FIXED CARBON FILM
R80	2412018002	3.9 kohm ±2% 1/4W FIXED CARBON FILM
R81	2412032091	47 kohm ±2% 1/4W FIXED CARBON FILM
R82	2412032091	47 kohm ±2% 1/4W FIXED CARBON FILM
R83	2412186905	20 ohm ±5% 1/4W FIXED CARBON FILM
R84	2412186905	20 ohm ±5% 1/4W FIXED CARBON FILM
R85	2412290901	430 kohm ±5% 1/4W FIXED CARBON FILM
R86	2412290901	430 kohm ±5% 1/4W FIXED CARBON FILM
R87	2412203901	100 ohm ±5% 1/4W FIXED CARBON FILM
R88	2412203901	100 ohm ±5% 1/4W FIXED CARBON FILM
R89	2412203901	100 ohm ±5% 1/4W FIXED CARBON FILM
R90	2412203901	100 ohm ±5% 1/4W FIXED CARBON FILM
R95	2412239908	2.2 kohm ±5% 1/4W FIXED CARBON FILM
CAPACITORS		
C07	2554137003	470 pF ±5% 50V FIXED PLASTIC FILM
C08	2554137003	470 pF ±5% 50V FIXED PLASTIC FILM
C09	2554137003	470 pF ±5% 50V FIXED PLASTIC FILM
C10	2554137003	470 pF ±5% 50V FIXED PLASTIC FILM
C11	2561008060	1 μF ±10% 100V FIXED METALIZED
C12	2561008060	1 μF ±10% 100V FIXED METALIZED
C13	2521026008	47 pF ±10% 100V FIXED MICA FILM
C14	2521026008	47 pF ±10% 100V FIXED MICA FILM
C15	2521030007	68 pF ±10% 100V FIXED MICA FILM

Ref. No.	Part No.	Part Name & Descriptions
C16	2521030007	68 pF ±10% 100V FIXED MICA FILM
C17	2554149004	0.0015 μF ±5% 50V FIXED PLASTIC FILM
C18	2554149004	0.0015 μF ±5% 50V FIXED PLASTIC FILM
C19	2521017004	20 pF ±5% 50V FIXED MICA FILM
C20	2521017004	20 pF ±5% 50V FIXED MICA FILM
C21	2554171001	0.012 μF ±5% 50V FIXED PLASTIC FILM
C22	2554171001	0.012 μF ±5% 50V FIXED PLASTIC FILM
C23	2554171001	0.012 μF ±5% 50V FIXED PLASTIC FILM
C24	2554171001	0.012 μF ±5% 50V FIXED PLASTIC FILM
C25	2521014007	15 pF ±5% 50V FIXED MICA FILM
C26	2521014007	15 pF ±5% 50V FIXED MICA FILM
C27	2554191007	0.082 μF ±5% 50V FIXED PLASTIC FILM
C28	2554191007	0.082 μF ±5% 50V FIXED PLASTIC FILM
C29	2554123004	120 pF ±5% 50V FIXED PLASTIC FILM
C30	2554123004	120 pF ±5% 50V FIXED PLASTIC FILM
C33	2544011003	220 μF ±10% 10V FIXED ELECTROLYTIC
C34	2544011003	220 μF ±10% 10V FIXED ELECTROLYTIC
C35	2541035008	1 μF ±5% 35V TANTALUM SOLID
C36	2541035008	1 μF ±5% 35V TANTALUM SOLID
C37	2554145008	0.001 μF ±5% 50V FIXED PLASTIC FILM
C38	2554145008	0.001 μF ±5% 50V FIXED PLASTIC FILM
C39	2554085016	0.18 μF ±2% 50V FIXED PLASTIC FILM
C40	2554085016	0.18 μF ±2% 50V FIXED PLASTIC FILM
C41	2554131009	270 pF ±5% 50V FIXED PLASTIC FILM
C42	2554131009	270 pF ±5% 50V FIXED PLASTIC FILM
C43	2554085032	0.068 μF ±2% 50V FIXED PLASTIC FILM
C44	2554085032	0.068 μF ±2% 50V FIXED PLASTIC FILM
C45	2544017007	47 μF ±16% FIXED ELECTROLYTIC
C46	2544017007	47 μF ±16% FIXED ELECTROLYTIC
C47	2554161008	0.0047 μF ±5% 50V FIXED PLASTIC FILM
C48	2554161008	0.0047 μF ±5% 50V FIXED PLASTIC FILM
C49	2554165004	0.0068 μF ±5% 50V FIXED PLASTIC FILM
C50	2554165004	0.0068 μF ±5% 50V FIXED PLASTIC FILM
C51	2554082046	0.18 μF ±5% 100V FIXED PLASTIC FILM
C52	2554082046	0.18 μF ±5% 100V FIXED PLASTIC FILM
C55	2544015009	10 μF ±16% FIXED ELECTROLYTIC
C57	2544015009	10 μF ±16% FIXED ELECTROLYTIC
OTHER PARTS		
	2220635004	P.W. BOARD
	2090042908	0.6 JUMPER WIRE USED 30
	2090008117	JUMPER SHORT LEAD P=12.5mm USED 3
	2090008104	JUMPER SHORT LEAD P=15mm USED 4
	EP-5667H1	TERMINAL FOR WRAPPING PIN USED 4
	2050122033	3P CONNECTOR PIN ASS.
	2050122059	5P CONNECTOR PIN ASS.
	2035622008	3P CONNECTOR BASE
VR	2170254003	VARIABLE RESISTOR 100 kohm FOR BASS
VR	2170254003	VARIABLE RESISTOR 100 kohm FOR TREBLE
	2124240003	3P. PUSH SWITCH
	2124241002	1P. PUSH SWITCH FOR DIRECT
	2120175004	ROTARY SWITCH (A) FOR MONITOR
	2120176003	ROTARY SWITCH (B) FOR REC OUT
	3930045019	PILOT LAMP FOR MC, MM
	3930045006	PILOT LAMP FOR TONE, DIRECT
	4140116106	SHIELD COVER



ETC 392B PARTS LIST

Ref. No.	Part No.	Part Name & Descriptions	Ref. No.	Part No.	Part Name & Descriptions
SEMICONDUCTORS					
D01	3939040002	LED TLG206 (IGREEN)			
		LIGHT EMITTING DIODE			
D02	3939040002	LED TLG206 (IGREEN)			
		LIGHT EMITTING DIODE			
D03	3939040002	LED TLG206 (IGREEN)			
		LIGHT EMITTING DIODE			
D04	3939040002	LED TLG206 (IGREEN)			
		LIGHT EMITTING DIODE			
D05	3939040002	LED TLG206 (IGREEN)			
		LIGHT EMITTING DIODE			
D06	3939040002	LED TLG206 (IGREEN)			
		LIGHT EMITTING DIODE			
D07	2760233005	M4C51			
		DIODE			
RESISTORS					
R01	2412068007	100 ohm ±5% 1/4W FIXED CARBON FILM			
R02	2412068007	100 ohm ±5% 1/4W FIXED CARBON FILM			
R05	2412156003	470 kohm ±5% 1/4W FIXED CARBON FILM			
R05	2412156003	470 kohm ±5% 1/4W FIXED CARBON FILM			
CAPACITORS					
C01	2544043000	0.47 μF ±5% 50V FIXED ELECTROLYTIC			
C02	2544043000	0.47 μF ±5% 50V FIXED ELECTROLYTIC			
C03	2544043000	0.47 μF ±5% 50V FIXED ELECTROLYTIC			
C04	2544043000	0.47 μF ±5% 50V FIXED ELECTROLYTIC			
C05	2554084017	0.01 μF ±5% 100V FIXED PLASTIC FILM			
C06	2554084017	0.01 μF ±5% 100V FIXED PLASTIC FILM			
C07	2554084017	0.01 μF ±5% 100V FIXED PLASTIC FILM			
OTHER PARTS					
	2220633006	P.W. BOARD			
	2090008120	JUMPER SHORT LEAD P=12.5mm USED 3			
	2090008117	JUMPER SHORT LEAD P=15mm USED 4			
	EP-5667H1	TERMINAL FOR WRAPPING PIN USED 4			
	2035622008	3P CONNECTOR BASE			
	2050122033	3P CONNECTOR PIN ASS.			
	2050087039	3P TERMINAL			
	2048045009	4P PIN JACK			
	2124244009	4P PUSH SWITCH			
	2048047007	HEADPHONE JACK			
	2050003000	3mm T TUB			
	4120724107	4P SWITCH BRACKET			
	4713303018	CROSS PATTERN WIRE			
	2034147005	3P CONNECTOR FOR MONITOR			
	2034148004	3P CONNECTOR FOR TONE			
	2034152003	3P CONTACT WIRE ASSY FOR BASS			
	2034152016	3P CONTACT WIRE ASSY FOR TREBLE			
	2034152029	3P CONTACT WIRE ASSY FOR PHN			
	2034152032	3P CONTACT WIRE ASSY FOR REC			
	2036082003	4P CONNECTOR FOR LED			
	2038091005	5P CONNECTOR FOR MONITOR			
	2038092004	5P CONNECTOR FOR TONE			
	2038093003	5P CONNECTOR FOR PHN			



PUX-028 PARTS LIST

Ref. No.	Part No.	Part Name & Descriptions	Ref. No.	Part No.	Part Name & Descriptions
SEMICONDUCTORS					
TR01	2730181019	2SC1583(G)/F TRANSISTOR	TR07	2710110000	2SA916(L) TRANSISTOR
TR02	2730181019	2SC1583(G)/F TRANSISTOR	TR08	2710110000	2SA916(L) TRANSISTOR
TR03	2730198002	2SC1815(Y) TRANSISTOR	TR09	2710110000	2SA916(L) TRANSISTOR
TR04	2730198002	2SC1815(Y) TRANSISTOR	TR10	2710110000	2SA916(L) TRANSISTOR
TR05	2730198002	2SC1815(Y) TRANSISTOR	TR11	2730205005	2SC1941(L) TRANSISTOR
TR06	2730198002	2SC1815(Y) TRANSISTOR	TR12	2730205005	2SC1941(L) TRANSISTOR
			TR13	2730198002	2SC1815(Y) TRANSISTOR
			TR14	2730198002	2SC1815(Y) TRANSISTOR

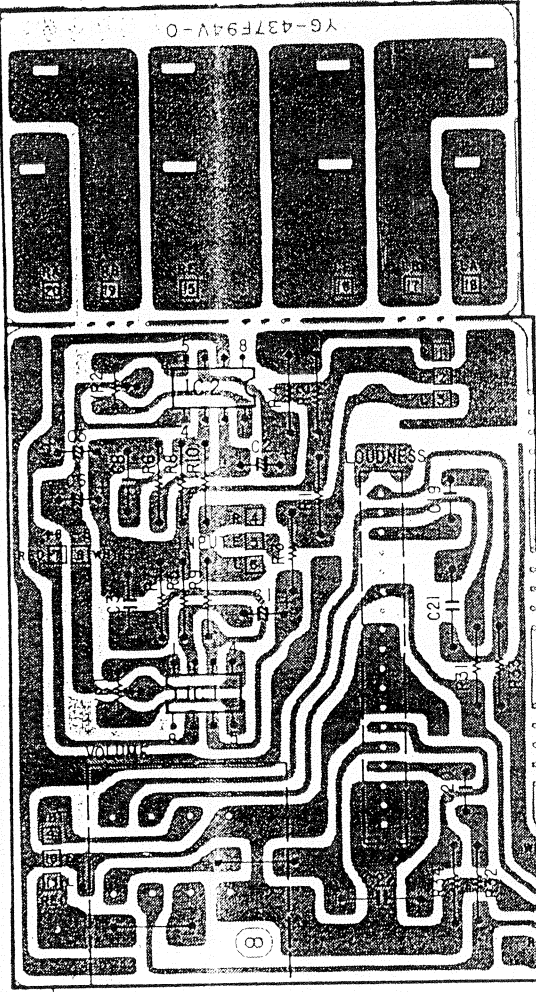
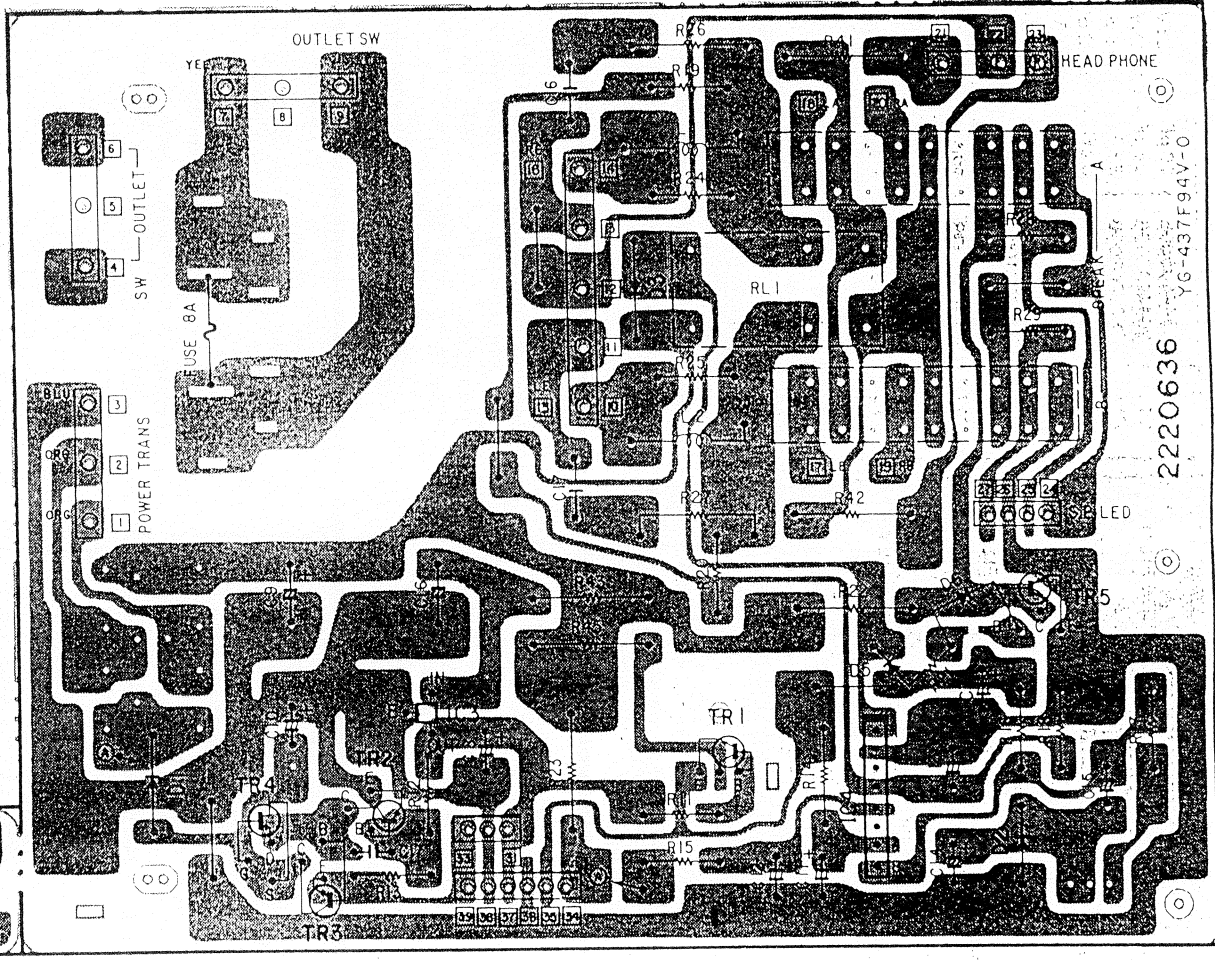
Ref. No.	Part No.	Part Name & Descriptions	Ref. No.	Part No.	Part Name & Descriptions
TR15	2710102005	2SA1015(Y) TRANSISTOR	R17	2420203003	10M ohm ±10% 1/4W FIXED CARBON COMPOSIT
TR16	2710102005	2SA1015(Y) TRANSISTOR	R18	2420203003	10M ohm ±10% 1/4W FIXED CARBON COMPOSIT
TR17	2710102005	2SA1015(Y) TRANSISTOR	R19	2412211906	220 ohm ±5% 1/4W FIXED CARBON FILM
TR18	2710102005	2SA1015(Y) TRANSISTOR	R20	2412211906	220 ohm ±5% 1/4W FIXED CARBON FILM
TR21	2730198002	2SC1815(Y) TRANSISTOR	R21	2412248908	7.5 kohm ±5% 1/4W FIXED CARBON FILM
TR22	2730198002	2SC1815(Y) TRANSISTOR	R22	2412248908	7.5 kohm ±5% 1/4W FIXED CARBON FILM
TR23	2730111063	2SC1213(D)/(C) TRANSISTOR	R23	2412248908	7.5 kohm ±5% 1/4W FIXED CARBON FILM
TR24	2730111063	2SC1213(D)/(C) TRANSISTOR	R24	2412248908	7.5 kohm ±5% 1/4W FIXED CARBON FILM
TR25	2710040073	2SA673A(D)/(C) TRANSISTOR	R25	2440053026	10 kohm ±5% 1W FIXED METAL OXIDE FILM
TR26	2710040073	2SA673A(D)/(C) TRANSISTOR	R26	2440053026	10 kohm ±5% 1W FIXED METAL OXIDE FILM
TR41	2730198015	2SC1815(BL) TRANSISTOR	R27	2442007012	330 ohm ±5% 1/4W FIXED METAL OXIDE FILM
TR42	2730198015	2SC1815(BL) TRANSISTOR	R28	2442007012	330 ohm ±5% 1/4W FIXED METAL OXIDE FILM
D01	2760049008	1S2076 DIODE	R29	2442007012	330 ohm ±5% 1/4W FIXED METAL OXIDE FILM
D02	2760049008	1S2076 DIODE	R30	2442007012	330 ohm ±5% 1/4W FIXED METAL OXIDE FILM
D05	2760220018	HZ24-1 DIODE	R31	2412195909	47 ohm ±5% 1/4W FIXED CARBON FILM
D06	2760220018	HZ24-1 DIODE	R32	2412195909	47 ohm ±5% 1/4W FIXED CARBON FILM
D07	2760220018	HZ24-1 DIODE	R33	2412195909	47 ohm ±5% 1/4W FIXED CARBON FILM
D08	2760220018	HZ24-1 DIODE	R34	2412195909	47 ohm ±5% 1/4W FIXED CARBON FILM
D09	2760171028	HV-23(YL) DIODE	R35	2410193000	2.2 kohm ±5% 1/4W FIXED CARBON FILM
D10	2760171028	HV-23(YL) DIODE	R36	2410193000	2.2 kohm ±5% 1/4W FIXED CARBON FILM
D11	2760171028	HV-23(YL) DIODE	R37	2442022013	51 ohm ±5% 1/4W FIXED METAL OXIDE FILM
D12	2760171028	HV-23(YL) DIODE	R38	2442022013	51 ohm ±5% 1/4W FIXED METAL OXIDE FILM
D13	2760049011	1S2076A DIODE	R39	2412179909	10 ohm ±5% 1/4W FIXED CARBON FILM
D14	2760049011	1S2076A DIODE	R40	2412179909	10 ohm ±5% 1/4W FIXED CARBON FILM
D15	2760049011	1S2076A DIODE	R41	2412179909	10 ohm ±5% 1/4W FIXED CARBON FILM
D16	2760049011	1S2076A DIODE	R42	2412179909	10 ohm ±5% 1/4W FIXED CARBON FILM
D17	2760049008	1S2076 DIODE	R43	2440070029	5.6 kohm ±5% 1W FIXED METAL OXIDE FILM
D18	2760049008	1S2076 DIODE	R44	2440070029	5.6 kohm ±5% 1W FIXED METAL OXIDE FILM
D19	2760049008	1S2076 DIODE	R45	2412235908	2.2 kohm ±5% 1W FIXED CARBON FILM
D20	2760049008	1S2076 DIODE	R46	2412235908	2.2 kohm ±5% 1W FIXED CARBON FILM
D21	2760254000	HZ7B-3 DIODE	R47	2412235908	2.2 kohm ±5% 1W FIXED CARBON FILM
D22	2760254000	HZ7B-3 DIODE	R48	2412235908	2.2 kohm ±5% 1W FIXED CARBON FILM
D23	2760049008	1S2076 DIODE	R49	2412203901	100 ohm ±5% 1/4W FIXED CARBON FILM
D24	2760049008	1S2076 DIODE	R50	2412203901	100 ohm ±5% 1/4W FIXED CARBON FILM
D25	2760049008	1S2076 DIODE	R51	2412203901	100 ohm ±5% 1/4W FIXED CARBON FILM
D26	2760049008	1S2076 DIODE	R52	2412203901	100 ohm ±5% 1/4W FIXED CARBON FILM
D27	2760132041	STV-3H(G) DIODE	R53	2442022000	1 kohm ±5% 1/4W FIXED METAL OXIDE FILM
D28	2760132041	STV-3H(G) DIODE	R54	2442022000	1 kohm ±5% 1/4W FIXED METAL OXIDE FILM
D29	2760132041	STV-3H(G) DIODE	R55	2442022000	1 kohm ±5% 1/4W FIXED METAL OXIDE FILM
D30	2760132041	STV-3H(G) DIODE	R56	2442022000	1 kohm ±5% 1/4W FIXED METAL OXIDE FILM
D31	2760049011	1S2076A DIODE	R57	2412203901	100 ohm ±5% 1/4W FIXED METAL OXIDE FILM
D32	2760049011	1S2076A DIODE	R58	2412203901	100 ohm ±5% 1/4W FIXED METAL OXIDE FILM
D33	2760049011	1S2076A DIODE	R59	2412235908	2.2 kohm ±5% 1/4W FIXED CARBON FILM
D34	2760049011	1S2076A DIODE	R60	2412235908	2.2 kohm ±5% 1/4W FIXED CARBON FILM
D35	2760049011	1S2076A DIODE	R61	2412211906	2.2 kohm ±5% 1/4W FIXED CARBON FILM
D36	2760049011	1S2076A DIODE	R62	2412211906	2.2 kohm ±5% 1/4W FIXED CARBON FILM
D37	2760049011	1S2076A DIODE	R63	2412235908	2.2 kohm ±5% 1/4W FIXED CARBON FILM
D38	2760049011	1S2076A DIODE	R64	2412235908	2.2 kohm ±5% 1/4W FIXED CARBON FILM
D39	2760254000	HZ7B-3 DIODE	R65	2412211906	2.2 kohm ±5% 1/4W FIXED CARBON FILM
D40	2760254000	HZ7B-3 DIODE	R66	2412211906	2.2 kohm ±5% 1/4W FIXED CARBON FILM
			R67	2442007067	120 ohm ±5% 1/4W FIXED METAL OXIDE FILM
			R68	2442007067	120 ohm ±5% 1/4W FIXED METAL OXIDE FILM

(Cont.)

Ref. No.	Part No.	Part Name & Descriptions
R69	2442007067	120 ohm ±5% ¼W FIXED METAL OXIDE FILM
R70	2442007067	120 ohm ±5% ¼W FIXED METAL OXIDE FILM
R71	2440041025	1 kohm ±5% 1W FIXED METAL OXIDE FILM
R72	2440041025	1 kohm ±5% 1W FIXED METAL OXIDE FILM
R73	2440041025	1 kohm ±5% 1W FIXED METAL OXIDE FILM
R74	2440041025	1 kohm ±5% 1W FIXED METAL OXIDE FILM
R75	2440013024	4.7 ohm ±5% 1W FIXED METAL OXIDE FILM
R76	2440013024	4.7 ohm ±5% 1W FIXED METAL OXIDE FILM
R77	2440013024	4.7 ohm ±5% 1W FIXED METAL OXIDE FILM
R78	2440013024	4.7 ohm ±5% 1W FIXED METAL OXIDE FILM
R79	2440013024	4.7 ohm ±5% 1W FIXED METAL OXIDE FILM
R80	2440013024	4.7 ohm ±5% 1W FIXED METAL OXIDE FILM
R81	2440013024	4.7 ohm ±5% 1W FIXED METAL OXIDE FILM
R82	2440013024	4.7 ohm ±5% 1W FIXED METAL OXIDE FILM
R83	2412191903	33 ohm ±5% ¼W FIXED CARBON FILM
R84	2412191903	33 ohm ±5% ¼W FIXED CARBON FILM
R85	2412191903	33 ohm ±5% ¼W FIXED CARBON FILM
R86	2412191903	33 ohm ±5% ¼W FIXED CARBON FILM
R87	2412191903	33 ohm ±5% ¼W FIXED CARBON FILM
R88	2412191903	33 ohm ±5% ¼W FIXED CARBON FILM
R89	2412191903	33 ohm ±5% ¼W FIXED CARBON FILM
R90	2412191903	33 ohm ±5% ¼W FIXED CARBON FILM
R91	2432026003	0.47 ohm ±10% 3.15W FIXED WIRE WOUND
R92	2432026003	0.47 ohm ±10% 3.15W FIXED WIRE WOUND
R93	2432026003	0.47 ohm ±10% 3.15W FIXED WIRE WOUND
R94	2432026003	0.47 ohm ±10% 3.15W FIXED WIRE WOUND
R95	2440022028	27 ohm ±10% 1W FIXED METAL OXIDE FILM
R96	2440022028	27 ohm ±10% 1W FIXED METAL OXIDE FILM
R97	2440029021	100 ohm ±10% 1W FIXED METAL OXIDE FILM
R98	2440029021	100 ohm ±10% 1W FIXED METAL OXIDE FILM
R99	2440051026	6.8 kohm ±10% 1W FIXED METAL OXIDE FILM
100	2440051026	6.8 kohm ±10% 1W FIXED METAL OXIDE FILM
101	2440051026	6.8 kohm ±10% 1W FIXED METAL OXIDE FILM
102	2440051026	6.8 kohm ±10% 1W FIXED METAL OXIDE FILM
CAPACITORS		
101	2554121006	100 pF ±5% 50V FIXED PLASTIC FILM
102	2554121006	100 pF ±5% 50V FIXED PLASTIC FILM
103	2554145008	0.001 μF ±5% 50V FIXED PLASTIC FILM
104	2554145008	0.001 μF ±5% 50V FIXED PLASTIC FILM
105	2554161008	0.0047 μF ±5% 50V FIXED PLASTIC FILM
106	2554161008	0.0047 μF ±5% 50V FIXED PLASTIC FILM
107	2544035005	10 μF 35V FIXED ELECTROLYTIC
108	2544035005	10 μF 35V FIXED ELECTROLYTIC

Ref. No.	Part No.	Part Name & Descriptions
C09	2544035005	10 μF 35V FIXED ELECTROLYTIC
C10	2544035005	10 μF 35V FIXED ELECTROLYTIC
C11	2521008000	8 pF ±0.5 pF 50V FIXED MICA FILM
C12	2521008000	8 pF ±0.5 pF 50V FIXED MICA FILM
C13	2521018003	22 pF ±5% 50V FIXED MICA FILM
C14	2521018003	22 pF ±5% 50V FIXED MICA FILM
C15	2521081001	7 pF ±0.5 pF 500V FIXED MICA FILM
C16	2521081001	7 pF ±0.5 pF 500V FIXED MICA FILM
C17	2554129008	220 pF ±5% 50V FIXED PLASTIC FILM
C18	2554129008	220 pF ±5% 50V FIXED PLASTIC FILM
C19	2544060025	1 μF 100V FIXED ELECTROLYTIC
C20	2544060025	1 μF 100V FIXED ELECTROLYTIC
C21	2554129008	220 pF ±5% 50V FIXED PLASTIC FILM
C22	2554129008	220 pF ±5% 50V FIXED PLASTIC FILM
C23	2554121006	100 pF ±5% 50V FIXED PLASTIC FILM
C24	2554121006	100 pF ±5% 50V FIXED PLASTIC FILM
C25	2554161008	0.0047 μF ±5% 50V FIXED PLASTIC FILM
C26	2554161008	0.0047 μF ±5% 50V FIXED PLASTIC FILM
C27	2554161008	0.0047 μF ±5% 50V FIXED PLASTIC FILM
C28	2554161008	0.0047 μF ±5% 50V FIXED PLASTIC FILM
C29	2554161008	0.0047 μF ±5% 50V FIXED PLASTIC FILM
C30	2554161008	0.0047 μF ±5% 50V FIXED PLASTIC FILM
C31	2554161008	0.0047 μF ±5% 50V FIXED PLASTIC FILM
C32	2554161008	0.0047 μF ±5% 50V FIXED PLASTIC FILM
C33	2544059036	4.7 μF 63V FIXED ELECTROLYTIC
C34	2544059036	4.7 μF 63V FIXED ELECTROLYTIC
C35	2544059036	4.7 μF 63V FIXED ELECTROLYTIC
C36	2544059036	4.7 μF 63V FIXED ELECTROLYTIC
C37	2544059036	4.7 μF 63V FIXED ELECTROLYTIC
C38	2544059036	4.7 μF 63V FIXED ELECTROLYTIC
C39	2544059036	4.7 μF 63V FIXED ELECTROLYTIC
C40	2544059036	4.7 μF 63V FIXED ELECTROLYTIC
C41	2554169000	0.01 μF ±5% 50V FIXED PLASTIC FILM
C42	2554169000	0.01 μF ±5% 50V FIXED PLASTIC FILM
C43	2521005003	5 pF ±0.5 pF 50V FIXED MICA FILM
C44	2521005003	5 pF ±0.5 pF 50V FIXED MICA FILM
C45	2521081014	1 pF ±0.5 pF 500V FIXED MICA FILM
C46	2521081014	1 pF ±0.5 pF 500V FIXED MICA FILM
C47	2521014007	15 pF ±0.5 pF 50V FIXED MICA FILM
C48	2521014007	15 pF ±0.5 pF 50V FIXED MICA FILM
C49	2521010001	10 pF ±0.5 pF 50V FIXED MICA FILM
C50	2521010001	10 pF ±0.5 pF 50V FIXED MICA FILM
C51	2544060025	1 μF 100V FIXED ELECTROLYTIC
C52	2544060025	1 μF 100V FIXED ELECTROLYTIC
C53	2544044009	1 μF 50V FIXED ELECTROLYTIC
C54	2544044009	1 μF 50V FIXED ELECTROLYTIC
C55	2544044009	1 μF 50V FIXED ELECTROLYTIC
C56	2544044009	1 μF 50V FIXED ELECTROLYTIC
OTHER PARTS		
VR01	2220634005	P.W. BOARD
VR02	2090042908	0.6 JUMPER WIRE USED 16
VR03	2090008117	JUMPER SHORT LEAD P=12.5mm USED 8
VR04	2050075025	2P. TERMINAL USED 2
	2050122033	3P. CONNECTOR PIN ASS.
	2035622008	3P. CONNECTOR BASE
	2116014014	SEMI FIXED RESISTOR 1 kohm
	2116014014	SEMI FIXED RESISTOR 1 kohm
	2116014030	SEMI FIXED RESISTOR 100 kohm
	2116014030	SEMI FIXED RESISTOR 100 kohm
	2030200030	1P. CONTACT (D) ASS FOR EAR TH
	2030208016	1P. CONTACT (D) ASS FOR Ld-B
	2030208029	1P. CONTACT (D) ASS FOR Rd-B
	2030207017	1P. CONTACT (D) ASS FOR Ld+B
	2030207020	1P. CONTACT (D) ASS FOR Rd+B
	2030207033	1P. CONTACT (D) ASS FOR Rdout
	2030199015	1P. CONTACT (D) ASS FOR Ldout

2220636 YG-437F94V-0



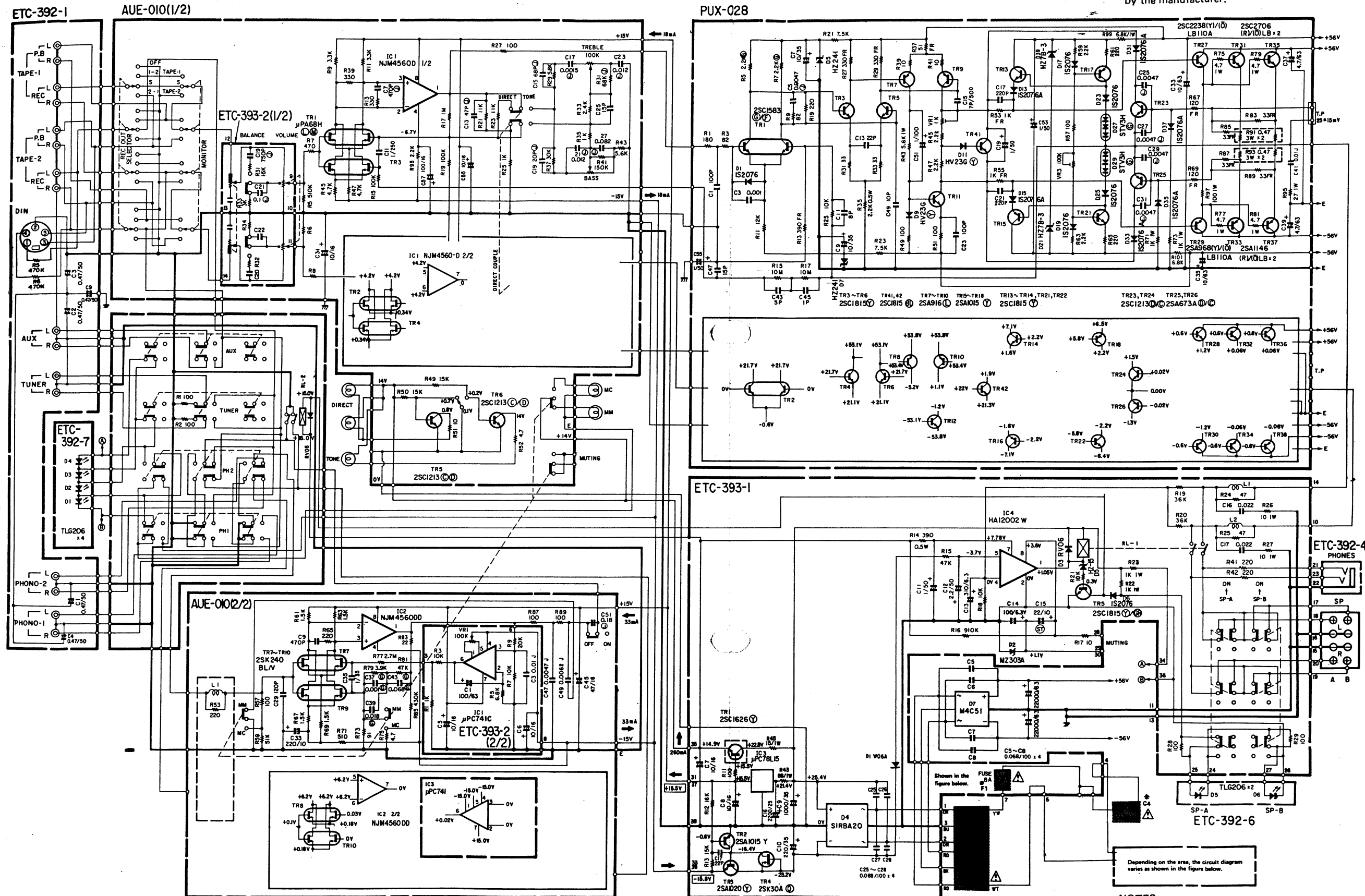
ETC-393B PARTS LIST

Ref. No.	Part No.	Part Name & Descriptions	
SEMICONDUCTORS			
IC01	2630133002	μ PC741C	INTEGRATED CIRCUIT
IC02	2630133002	μ PC741C	INTEGRATED CIRCUIT
IC03	2630138007	μ PC78L15A	INTEGRATED CIRCUIT
IC04	2630102004	HA12002W	INTEGRATED CIRCUIT
TR01	2730177007	2SC1626(Y)	TRANSISTOR
TR02	2710102005	2SA1015(Y)	TRANSISTOR
TR03	2710117003	2SA1020(Y)	TRANSISTOR
TR04	2750018009	2SK30A(D)	FOR FIELD EFFECT TRANSISTOR
TR05	2730198044	2SC1815(Y)/(R)	FOR FIELD EFFECT TRANSISTOR
D01	2760158	W06A	DIODE
D02	2760244007	MZ230	DIODE
D03	2760237001	RV06	DIODE
D04	2760239009	S1RBA20F	DIODE
RESISTORS			
R01	2412229903	1 kohm \pm 5% $\frac{1}{4}$ W	FIXED CARBON FILM
R02	2412229903	1 kohm \pm 5% $\frac{1}{4}$ W	FIXED CARBON FILM
R03	2412251908	10 kohm \pm 5% $\frac{1}{4}$ W	FIXED CARBON FILM
R04	2412251908	10 kohm \pm 5% $\frac{1}{4}$ W	FIXED CARBON FILM
R05	2412247909	6.8 kohm \pm 5% $\frac{1}{4}$ W	FIXED CARBON FILM
R06	2412247909	6.8 kohm \pm 5% $\frac{1}{4}$ W	FIXED CARBON FILM
R07	2412251908	10 kohm \pm 5% $\frac{1}{4}$ W	FIXED CARBON FILM
R08	2412251908	10 kohm \pm 5% $\frac{1}{4}$ W	FIXED CARBON FILM
R09	2412258901	20 kohm \pm 5% $\frac{1}{4}$ W	FIXED CARBON FILM
R10	2412258901	20 kohm \pm 5% $\frac{1}{4}$ W	FIXED CARBON FILM
R11	2412203901	100 ohm \pm 5% $\frac{1}{4}$ W	FIXED CARBON FILM
R12	2412256903	16 kohm \pm 5% $\frac{1}{4}$ W	FIXED CARBON FILM
R13	2412255904	15 kohm \pm 5% $\frac{1}{4}$ W	FIXED CARBON FILM
R14	2410175002	390 ohm \pm 5% $\frac{1}{4}$ W	FIXED CARBON FILM
R15	2412242903	4.7 kohm \pm 5% $\frac{1}{4}$ W	FIXED CARBON FILM
R16	2412298903	910 kohm \pm 5% $\frac{1}{4}$ W	FIXED CARBON FILM
R17	2412179909	100 ohm \pm 5% $\frac{1}{4}$ W	FIXED CARBON FILM
R18	2412251908	10 kohm \pm 5% $\frac{1}{4}$ W	FIXED CARBON FILM
R19	2412264908	36 kohm \pm 5% $\frac{1}{4}$ W	FIXED CARBON FILM
R20	2412264908	36 kohm \pm 5% $\frac{1}{4}$ W	FIXED CARBON FILM
R21	2412275900	100 kohm \pm 5% $\frac{1}{4}$ W	FIXED CARBON FILM
R22	2440041025	1 kohm \pm 5% 1W	FIXED METAL OXIDE FILM
R23	2440041025	1 kohm \pm 5% 1W	FIXED METAL OXIDE FILM
R24	2412195909	47 ohm \pm 5% $\frac{1}{4}$ W	FIXED CARBON FILM
R25	2412195909	47 ohm \pm 5% $\frac{1}{4}$ W	FIXED CARBON FILM
R26	2440017020	10 ohm \pm 5% 1W	FIXED METAL OXIDE FILM
R27	2440017020	10 ohm \pm 5% 1W	FIXED METAL OXIDE FILM
R28	2412203901	100 ohm \pm 5% $\frac{1}{4}$ W	FIXED CARBON FILM
R29	2412203901	100 ohm \pm 5% $\frac{1}{4}$ W	FIXED CARBON FILM
R31	2412255904	15 kohm \pm 5% $\frac{1}{4}$ W	FIXED CARBON FILM
R32	2412255904	15 kohm \pm 5% $\frac{1}{4}$ W	FIXED CARBON FILM
R33	2412238905	3 kohm \pm 5% $\frac{1}{4}$ W	FIXED CARBON FILM
R34	2412238905	3 kohm \pm 5% $\frac{1}{4}$ W	FIXED CARBON FILM
R41	2440033020	220 ohm \pm 5% 1W	FIXED METAL OXIDE FILM
R42	2440033020	220 ohm \pm 5% 1W	FIXED METAL OXIDE FILM
R43	2440027023	68 ohm \pm 5% 1W	FIXED METAL OXIDE FILM
R45	2440017020	10 ohm \pm 5% 1W	FIXED METAL OXIDE FILM

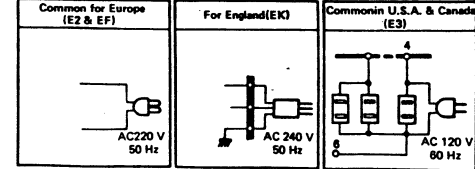
Ref. No.	Part No.	Part Name & Descriptions	
CAPACITORS			
C01	2544003008	100 μ F	6.3V FIXED ELECTROLYTIC
C02	2544003008	100 μ F	6.3V FIXED ELECTROLYTIC
C03	2554169000	0.01 μ F \pm 5%	50V FIXED PLASTIC FILM
C04	2554169000	0.01 μ F \pm 5%	50V FIXED PLASTIC FILM
C05	2544015009	10 μ F	16V FIXED ELECTROLYTIC
C06	2544015009	10 μ F	16V FIXED ELECTROLYTIC
C07	2544015009	10 μ F	16V FIXED ELECTROLYTIC
C08	2544015009	10 μ F	16V FIXED ELECTROLYTIC
C09	2544042001	1000 μ F	35V FIXED ELECTROLYTIC
C10	2544039001	220 μ F	35V FIXED ELECTROLYTIC
C11	2544044009	1 μ F	50V FIXED ELECTROLYTIC
C12	2544066003	2.2 μ F	50V FIXED ELECTROLYTIC
C13	2544005006	330 μ F	6.3V FIXED ELECTROLYTIC
C14	2549015004	22 μ F \pm 10%	10V FIXED ELECTROLYTIC
C15	2549015004	22 μ F \pm 10%	10V FIXED ELECTROLYTIC
C16	2554177005	0.022 μ F \pm 5%	50V FIXED PLASTIC FILM
C16	2544079016	2200 μ F	25V FIXED ELECTROLYTIC
C17	2554177005	0.022 μ F \pm 5%	50V FIXED PLASTIC FILM
C17	2521018003	22 pF	\pm 5% 50V FIXED MICA FILM
C19	2554142001	0.01 μ F \pm 5%	50V FIXED PLASTIC FILM
C20	2554142001	0.01 μ F \pm 5%	50V FIXED PLASTIC FILM
C21	2554193005	0.1 μ F \pm 5%	50V FIXED PLASTIC FILM
C22	2554193005	0.1 μ F \pm 5%	50V FIXED PLASTIC FILM
OTHER PARTS			
	2220636003	P.W. BOARD	
	2090042908	0.6 JUMPER WIRE USED 7	
	2050070004	8P. TERMINAL FOR SPEAKER	
	2124242001	SLIDE SWITCH (REMOTE) FOR LOUDNESS	
VR01	2116014030	SEMI FIXED RESISTOR 100 kohm	
VR02	2116014030	SEMI FIXED RESISTOR 100 kohm	
L01	2320017001	INDUCTOR	
L02	2320017001	INDUCTOR	
RL01	2140041008	RELAY	
	2020014003	FUSE CLIP	
	EP-5667H1	TERMINAL FOR WRAPPING PIN USED 1	
	2050087039	3P TERMINAL	
	2050087055	5P TERMINAL	
	2050122033	3P CONNECTOR PIN ASS.	
	2055622008	3P CONNECTOR BASE	
	2035622024	4P MINI CONNECTOR PIN	
	2035622082	6P CONNECTOR BASE	
VR	2110257000	VARIABLE RESISTOR 50 kohm FOR MAIN VR	
VR	2110256001	VARIABLE RESISTOR 100 kohm FOR BALANCE	
SW	2124243000	2P PUSH SWITCH FOR SPEAKER SWITCH	
	2034146006	3P CONNECTOR CORD FOR +, - B	
	2034149003	3P CONNECTOR CORD FOR BALANCE IN	
	2034149029	3P CONNECTOR CORD FOR VOLUME OUT	
	2034151004	3P CONNECTOR CORD FOR SERVO OUT IN	
	4170021009	RADIATOR	
	4730354019	TAPPING SCREW 3x8 FOR TR01 FIXED	
	5130159185	FUSE LABEL	
	4730354019	TAPPING SCREW 3x8 FOR RADIATOR FUSE U	

WIRING DIAGRAM

⚠ Means important safety item, which must be replaced, when necessary, by a part specified or meeting the specification by the manufacturer.

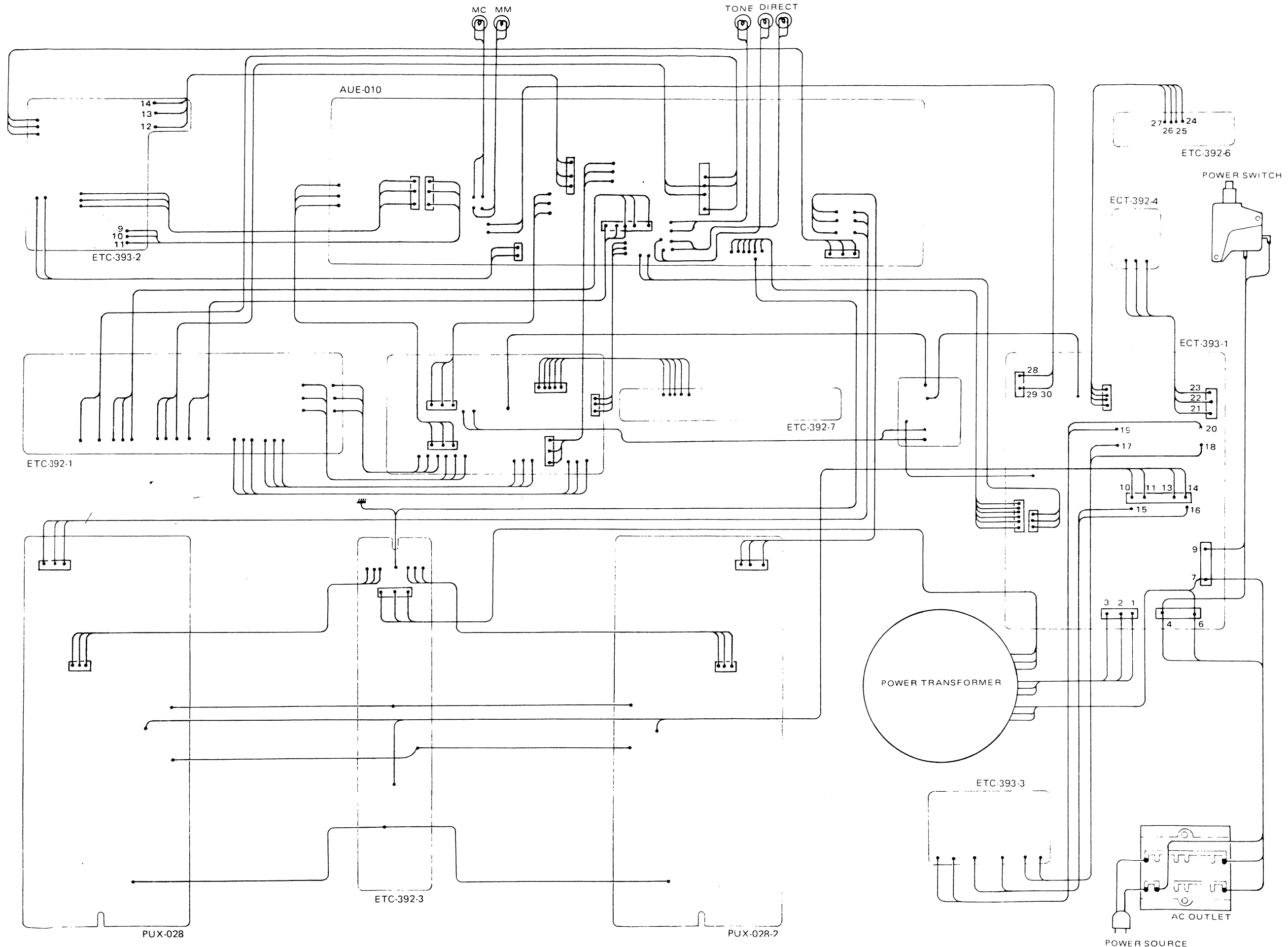


MARK	C4	F1
Common for Europe (E2 & EF)	0.01 (450V)	4A
For England (EK)	0.01 (450V)	4A
Common in U.S.A. & Canada (E3)	0.022 (125V)	8A

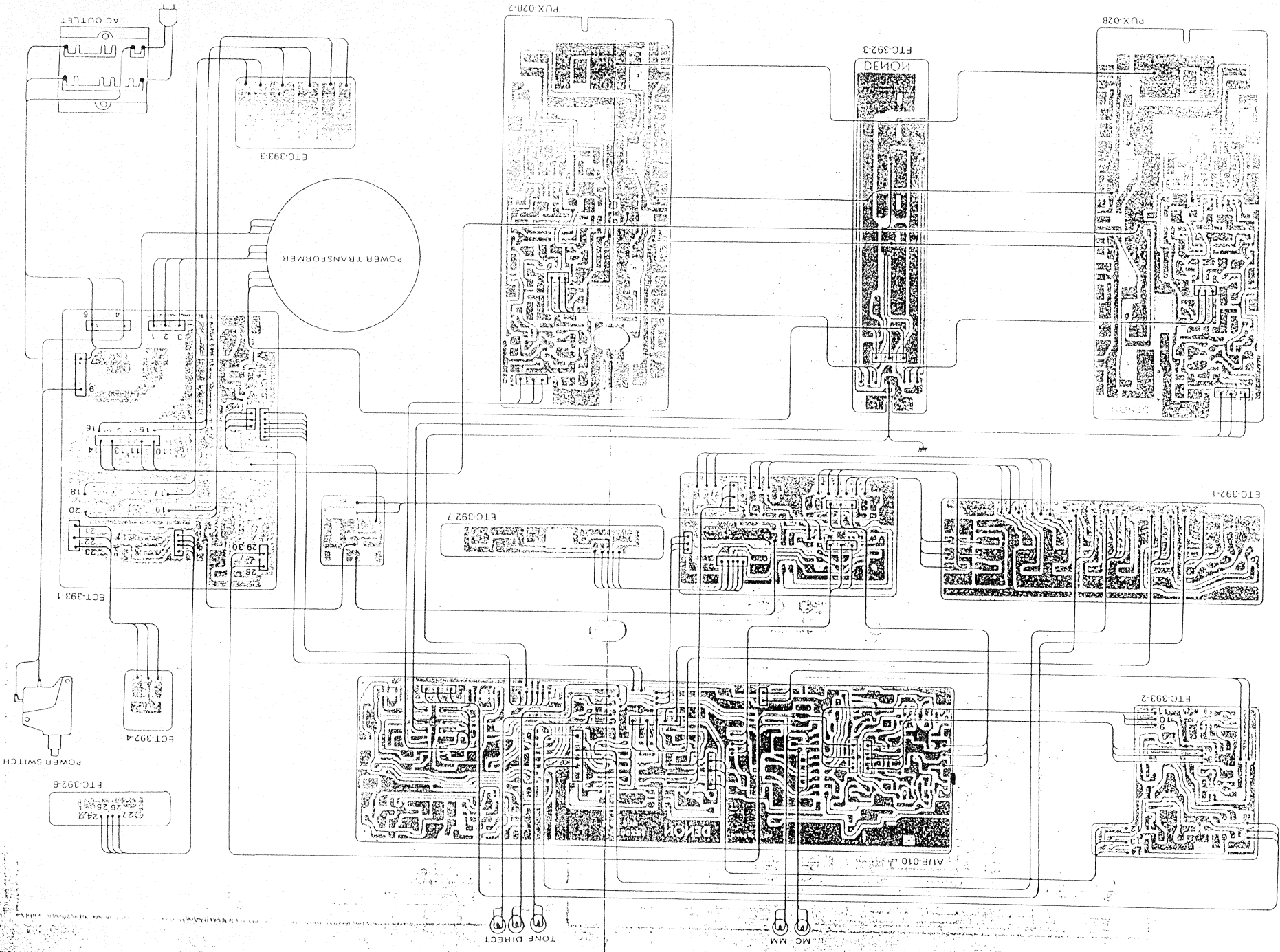


NOTES:
 ALL RESISTANCE VALUES IN OHM, K = 1,000 OHM, M = 1,000,000 OHM.
 ALL CAPACITANCE VALUES IN MICROFARAD, P = MICRO-MICRO FARAD.
 EVERY VOLTAGES AND CURRENTS IS MEASURED AT NO SIGNAL INPUT CONDITION.
 CIRCUIT AND PARTS ARE SUBJECT TO CHANGE WITHOUT PRIOR NOTICE.

CONNECTION DIAGRAM This connection diagram is viewed from the printed pattern side and used E3 (U.S.A. & Canada) version.



CONNECTION DIAGRAM This connection diagram is viewed from the printed pattern side and used E3 (U.S.A. & Canada) version.



DENON

IPPON COLUMBIA CO., LTD.
14-14, 4-CHOME AKASAKA,
NATO-KU, TOKYO 107 JAPAN
TEL: 03-584-8111
X: JAPANOLA J22591
FAX: NIPPONCOLUMBIA TOKYO

Printed in Japan